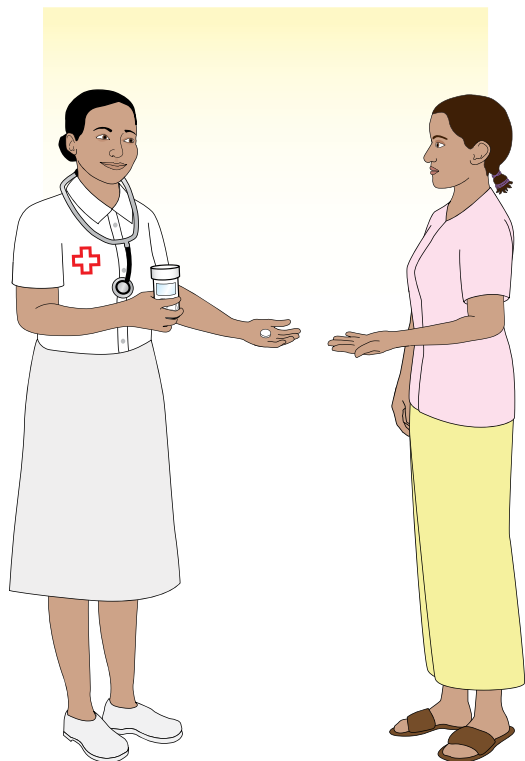


Using misoprostol pills to treat incomplete abortion

SUBLINGUAL USE

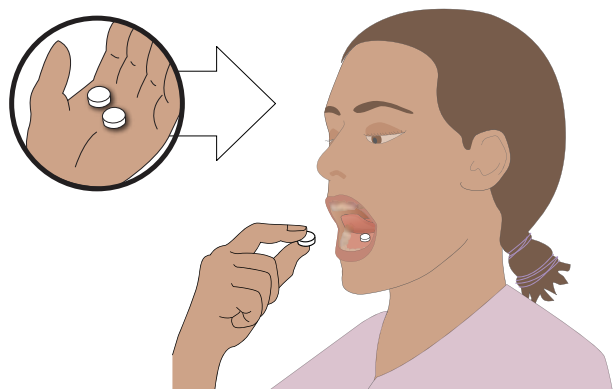
TREATMENT OF INCOMPLETE ABORTION AND MISCARRIAGE WITH MISOPROSTOL PILLS

If you are having an incomplete abortion, you can be treated safely and effectively with misoprostol pills.



HOW TO TAKE MISOPROSTOL PILLS

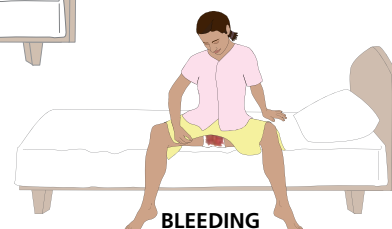
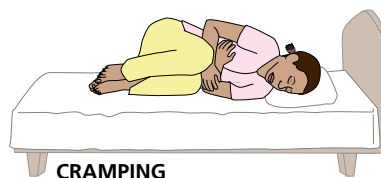
Place 2 misoprostol pills (400mcg) under your tongue. Keep pills under your tongue until they melt, or for about 30 minutes, then swallow whatever is left.



00:30

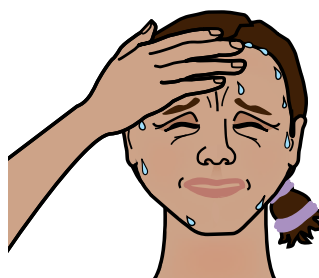
WHAT WILL HAPPEN WHEN YOU TAKE THE PILLS?

Misoprostol causes the uterus to contract. You will have some vaginal bleeding and cramping and you may see blood clots.



MANY WOMEN DO NOT HAVE SIDE EFFECTS

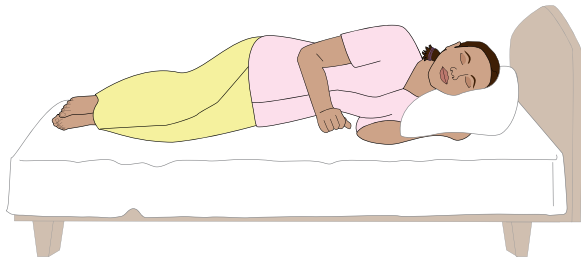
But some women may experience fever, chills, nausea or diarrhea. These should go away on their own in a few hours.



FEVER / CHILLS

HOW CAN YOU MANAGE THE SIDE EFFECTS?

You can take pain medicines for cramps. Fever medicines are rarely needed. Drinking lots of water and getting rest will also help. Most side effects will disappear on their own in a short time.



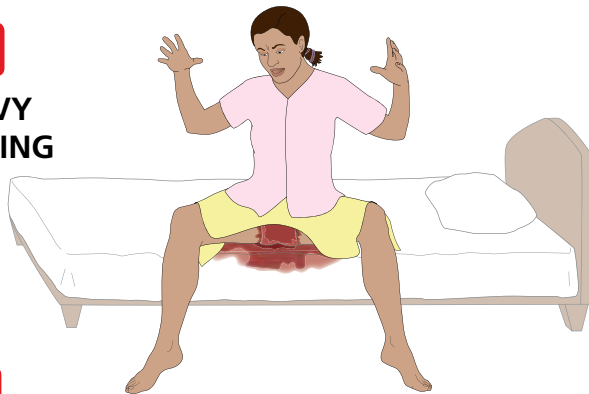
WHEN SHOULD YOU SEEK HELP FROM A HEALTH-CARE PROVIDER?

You should seek immediate help if you have:

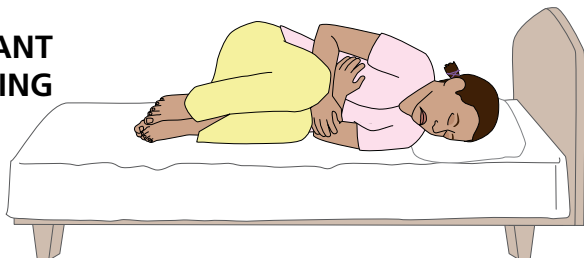
- Heavy bleeding
- Fever which lasts more than a day or starts any day after the day you take misoprostol
- Constant cramping and pain that does not get better with medication, rest, or heating pad
- The feeling of being very sick



HEAVY BLEEDING



CONSTANT CRAMPING

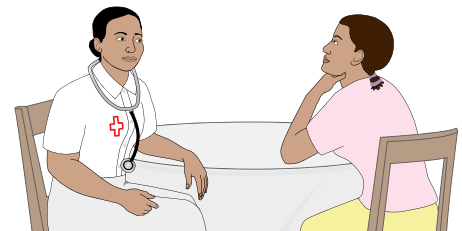
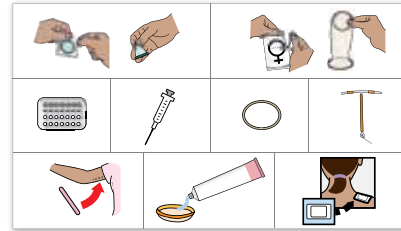


FEVER



WHAT IS THE BEST CONTRACEPTIVE METHOD FOR ME?

You are able to get pregnant again within a couple of weeks. If you would like contraception, it should be started immediately. You can start most methods at the same time you take your misoprostol tablets.



WHEN SHOULD I COME BACK FOR FOLLOW-UP?

Please come back for a follow-up visit in 1 — 2 weeks to ensure that your treatment was successful.



DATE OF YOUR FOLLOW-UP VISIT:

____ / ____ / ____

LOCATION:

PHONE:

